

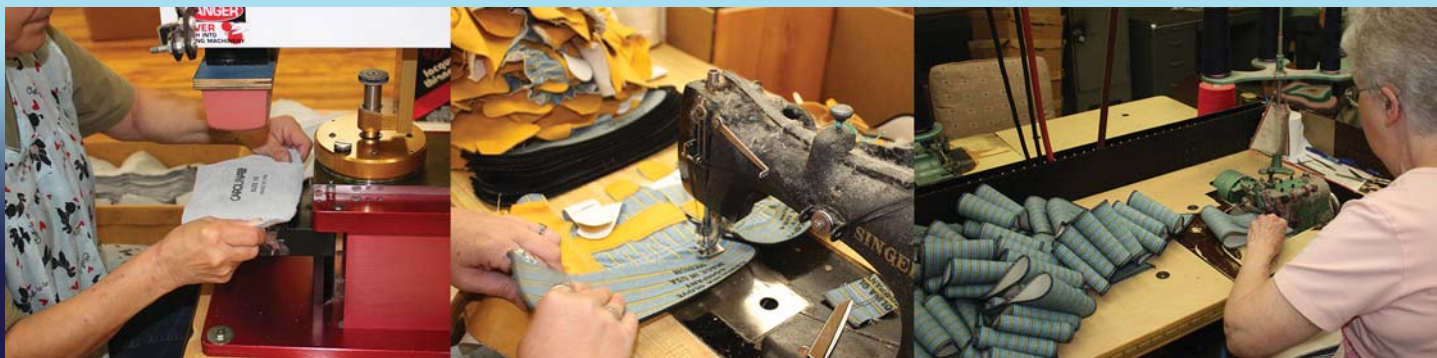
CAROLINA

GLOVE & SAFETY COMPANY

American Made, Family Owned Since 1946.



P.O. BOX 999 • CONOVER, NC 28613 • 877-800-5998
www.carolinaglove.com



ALLOW US TO INTRODUCE OURSELVES!

Carolina Glove & Safety Co. was founded in 1946 and is located in the beautiful Foothills region of North Carolina. We are proud to be owned and operated for over 65 years by the Abernethy family. During those years we have evolved into a major player in the glove and safety business, capable of producing over 65,000 dozen gloves per week and offering our customers a selection of over 5,000 different variations.

“HARD WORKIN’ GLOVES for HARD WORKIN’ PEOPLE”

We are one of the few companies left in our industry who continues to cling to its' roots, producing an extensive line of quality AMERICAN MADE hand protection. Over the years, as our customer preferences modified, we kept in step by sourcing gloves and other safety products from countries throughout the world. Changing markets and business climates have continued to mold us into a full service company, capable of satisfying the most discriminating taste.

“COMFORT CRAFTED by CAROLINA GLOVE”

Most products featured in this Consumer Catalog are tagged and have barcodes for use in the general retail market. They are found in every class of trade...Farm, Ranch, Hardware, Grocery, Convenience Stores, Home Centers, Garden Centers, Truck Stops, Marine Supply Stores, Auto After-Markets, Equipment Rental Stores, even in Contractor/Industrial Supply showrooms...You name it! We have it!

“CAROLINA PROMOTIONS DELIVER...PROFITABLY”

While the list shown within is extensive, it doesn't begin to reveal everything we carry. Please see our Industrial Catalog for many other styles, including Kevlar®, Sleeves, Hot Mills, Welders, Linesman, Flame Retardant, Palm Coated, Terry Cloth, Safety Vests, Hard Hats, etc.

“FITS BETTER...WEARS LONGER”

As an ISO 9001:2008 Registered Company, we adhere to strict guidelines and are committed to quality products and service exceeding customer expectations. We maintain an experienced Sales Service staff and are in step with the electronic age with EDI and tracing facilities.

CAROLINA

GLOVE & SAFETY COMPANY

To Order, Phone: 877-800-5998 or 800-438-6888

Fax: 828-485-2418 or 828-464-1710

Website: www.carolinaglove.com

Email: salescon@carolinaglovecompany.com

We are a ISO 9001:2008 REGISTERED Company.

We are a Dupont™ Licensed Manufacturer of 100% **Kevlar®** Products.



TABLE OF CONTENTS

Consumer/Retail with Barcode and Hang Tags

Glove Information.....	Page 1
Lined Leather Drivers.....	Page 2
Unlined Leather Drivers.....	Page 3
Leather Palms.....	Page 4
Jerseys.....	Page 5
Knit Gloves.....	Page 6
Double Palms and Chores.....	Page 7
Canvas.....	Page 8
Sportsman.....	Page 9-10
Coated & Chemical Resistant.....	Page 11
Extreme Wear.....	Page 12
Garden Gloves.....	Page 13-15
Children's Gloves.....	Page 16
New/Popular Styles.....	Page 17
Popular Assortments.....	Page 18
Rain-Wear.....	Page 19
Safety-Wear.....	Page 20
Safety Glasses.....	Page 21
Displays.....	Page 22

Industrial - Untagged Items

Kevlar® Knits.....	Page 23
Welders.....	Page 24
Utility Gloves.....	Page 25
Palm Coated.....	Page 26
Safety-Wear.....	Page 27

Trademarks.....	Page 28
-----------------	---------

Our American Made Style Begins with Prefix 0, Prefix 1 & 2 Denotes Import.

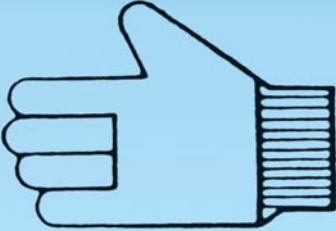
GLOVE INFORMATION



CLUTE PATTERN
(Straight Thumb) Excellent Fit, Usually Straight Thumb, Not a Reversible Pattern



GUNN CUT PATTERN
Palm side of gloves' surface extends two-thirds of the way around the fingers.



REVERSIBLE PATTERN
(Gunn Cut) (Wing Thumb) Thumb at side of glove, permitting glove to be worn on either hand.



KEYSTONE THUMB
Comfortable, Sewn-in-Thumb



SLIP-ON-PATTERN
Allows easy On and Off; Has no cuff.

Types of Leather

Cow- Cowhide Leather is the most commonly used leather within the glove industry due to its plentiful availability. Chrome tanning of this leather provides greater wear and heat resistance.

Pig- Pigskin affords the greatest breathability due to the porous texture of this hide. Additionally, pigskin tends to become softer with use and withstands moisture without stiffening. When laundered, this leather will return more to its natural soft texture.

Goat- Goatskin provides natural lanolin that helps to create abrasion resistance.

Cuts of Leather

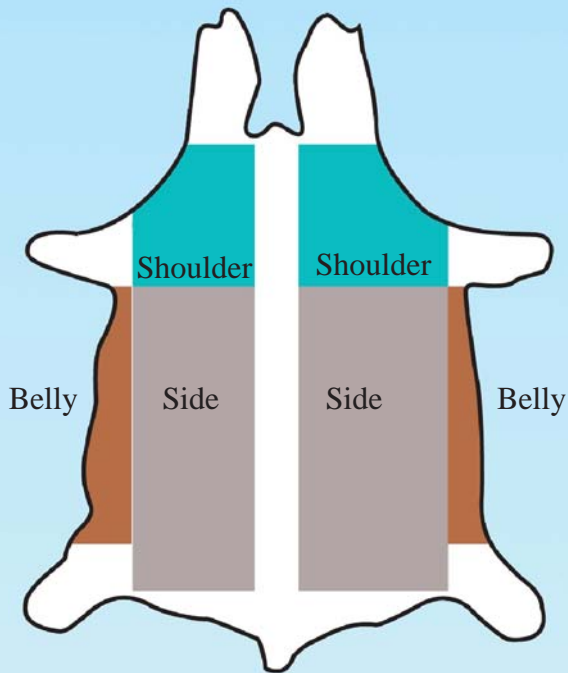
Grain- Grain Leather is the smooth external side of the hide.

Split- Split Leather is the rougher internal side of the hide. The different types will be side, shoulder, or belly split.

Side Split- Side split is the most durable and provides the greatest density of fibers.

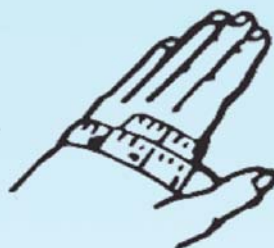
Shoulder Split- Shoulder split leather is more economical, but less durable.

Belly Split- Belly split leather is the most economical, but it has the least consistency of texture and appearance.



Men's
7" = X Small
8" = Small
9" = Medium
10" = Large
11" = X Large
12" = XX Large

Women's
6 1/2" - 7 1/2" = Small
8" - 9" = Medium
9 1/2" - 10 1/2" = Large



Leather, Cotton, Synthetic, & String styles are identified with an alphabetic (S, M, L, XL) reference. Unsupported styles use numeric (7,8,9,10) notations. By measuring the circumference around the palm at the knuckle area, the numeric measurement can be determined.

LINED LEATHER DRIVERS



**Hand Crafted Leather
Work Gloves.
Made with Pride!**



**Premium Grain
Deerskin, Keystone
Thumb, Thinsulate
Lined**
Import
19933 X-Large
19932 Large
19931 Medium



**Top Grain Cowhide,
Straight Thumb**
Made in USA
Thermal Lined
X-Large 09209
Large 09210
Medium 09211



**Select Grain Pigskin,
Keystone Thumb,
Fleece Lined**
Import
19873 X-Large
19872 Large
19871 Medium



**Premium Grain
Goatskin, Keystone Thumb,
Lanolin Properties,
Fleece Lined**
Import
19514 X-Large 19511 Small
19513 Large 19510 Ladies'
19512 Medium



**Hard
Workin'
Gloves!**

**Bourbon Brown
Brushed Pigskin,
Keystone Thumb,
Heavy Pile Lined**

Import
19242 XX-Large
19243 X-Large
19245 Medium



**Desert Sand Split
Cowhide, Straight Thumb**
Made in USA

Thinsulate Lined	Heavy Pile Lined
09969 X-Large	09238
09965 Large	09260
09966 Medium	09261



**Snug
Fit For
Comfort!**

**Bucktan Side Split Cowhide,
Heavy Pile Lined, Keystone
Thumb**

Import
X-Large 19855
Large 19856
Medium 19857



New!

**Dark Brown Split Cowhide,
Keystone Thumb, Fleece Lined**

Import
X-Large 19849
Large 19848
Medium 19847



DISPLAY #90403

1 Dozen Each 19960
and 19961 Select Grain
Cowhide Drivers in a
D081 shelf display



**Select Grain Cowhide,
Keystone Thumb,
Fleece Lined**

Import
19960 X-Large
19961 Large
19962 Medium
19963 Small



**Premium Black Goatskin,
Keystone Thumb, Fleece
Lined**

Import
19518 Large
19517 Medium
19516 Small



Thinsulate

Heavy Pile

Fleece

**Thermal
Weave**

Jersey

LINING STYLES

UNLINED LEATHER DRIVERS



Pearl Gray Split Cowhide

USA Import
 X-Large 19840
 09910 Large 19841
 09911 Medium 19842
 Small 19843
 *Straight Thumb USA,
 * Keystone Thumb Import



Top Grain Deerskin

USA Import
 X-Large 19921
 09920 Large 19920
 09921 Medium 19919
 *Straight Thumb- USA
 * Keystone Thumb- Import



Top Grain Cowhide

USA Import
 09854 X-Large 19854
 09850 Large 19850
 09851 Medium 19851
 09852 Small 19852
 09849 X-Small
 *Straight Thumb USA, Keystone
 Thumb Import



**Soft Grain Pigskin,
Keystone Thumb**

Import
 19864 X-Large
 19865 Large
 19866 Medium
 19867 Small



**Premium Goatskin,
Lanolin Properties,
Keystone Thumb**

Import
 19504 X-Large
 19503 Large
 19502 Medium
 19501 Ladies'



**Bourbon Brown
Brushed Pigskin,
Keystone Thumb,
Rolled Cuff**

Import
 19802 X-Large
 19800 Large
 19801 Medium
 19803 Small



**Beige Brushed Pigskin,
Keystone Thumb,
Rolled Cuff**

Import
 19820 X-Large
 19819 Large
 19817 Small



**Grain Doe Kidskin,
Lanolin Properties,
Wing Thumb,
Reinforced Index Finger**

Made in USA
 09750 Men's Size 11
 09751 Men's Size 10
 09754 Men's Size 9
 09755 Ladies' Size 8
 09756 Ladies' Size 7



**Grain Cowhide Driver,
Gray Split Leather Back,
Keystone Thumb**

Import
 19884 X-Large
 19883 Large
 19882 Medium
 19881 Small
 19880 X-Small

New!



**Dark Brown Split
Cowhide, Keystone
Thumb**

Import
 19824 X-Large
 19806 Large
 19807 Medium



**Top Grain Cowhide, Ball
& Tape Closure, Straight
Thumb**

Made in USA
 09833 X-Large
 09830 Large
 09831 Medium
 09832 Small



**Top Grain Cowhide,
Pull Strap Closure,
Keystone Thumb**

Import
 19833 X-Large
 19830 Large
 19831 Medium
 19832 Small



**Value Grain
Cowhide, Keystone
Thumb**

Import
 19888 X-Large
 19887 Large
 19886 Medium
 19885 Small



**Premium Doe Kidskin,
Reinforced Index Finger,
Lanolin Properties,
Straight Thumb**

Made in USA
 09760 Size 11 XL
 09761 Size 10 Large
 09764 Size 9 Medium
 09765 Size 8 Small
 09766 Size 7 X-Small



LEATHER PALMS



**Split Cowhide,
Reinforced Leather
Palm, Safety Cuff**

Import
19417 Select
19411 Value



**Premium Grade, Full
Leather Palm, Safety
Cuff**

Import
19445 Large



**Gray Split Cowhide,
Full Feature, Safety
Cuff**

Import
19441 Select
19402 Quality
19401 Value



**Gray Split Cowhide,
Full Leather Palm,
Knit Wrist**

USA Import
09101 Large 19101
09102 Boys & Ladies



**Premium Leather
Palm, Gunn Cut,
Gauntlet Cuff**

Made in USA
09406 Men's Large



**Full Feature
Cowhide Leather
Palm, Gunn Cut,
Gauntlet Cuff**

Import
19443 Select
19408 Quality
19406 Value



**Select Side Split
Cowhide, Safety Cuff**

Made in USA
09402 Men's Large
09404 Men's X-Large



**Russet Split Leather
Palm, Duraweave Back**

Import
19310 Men's Large
19311 Ladies' Size



**Black Leather Palm,
Yellow Back & Safety
Cuff, Heavy Pile Lined**

Import
19460 Large



**Premium Bourbon
Brown Leather, Yellow
Back, Safety Cuff**

Import
19450 Large



**"Warm Keep" Grain
Leather Palm, Heavy Duty
Fleece Lining**

Import
20030 Large



**Select Grain Leather Palm,
Duraweave Fabric Back,
Shirred Wrist**

Import
19262 Men's X-Large
19260 Men's Large
19261 Men's Med.
19266 Ladies' Size



**Bourbon Brown Split
Leather Palm, Navy
Duraweave Back,
Shirred Wrist**

Import
19252 Men's X-Large
19250 Men's Large
19251 Men's Medium
19255 Ladies' Large
19256 Ladies' Medium



Display #90406
2 Dozen 19401 Leather
Palm, in a D081 Shelf Unit

Display #90103
8 Dozen 19401 Leather
Palm Gloves, 32 Each 3 Pair
Packs, in a 96D Floor Unit



JERSEYS



Brown Cotton Jersey

Made in USA

06005 13 oz. Large
06031 10.5 oz. X Large
06002 10.5 oz. Large
06003 9 oz. X-Large
06001 9 oz. Large
06020 9 oz. Boy's & Ladies'



Brown Cotton Jersey

Import

16004 Heavy Wt. Large
16001 Standard Wt. Large
16020 Standard Wt. Ladies
16006 Value, Med. Wt. Large
16007 Economy Med. Wt. Large



"Tuff Dot", PVC Dotted, Brown Jersey

Made in USA

Import

06040 PVC Dot, Large
Mini Dot Large 16041
06050 Boys/Ladies 16042



Red Lined Brown Jersey, Slip-On

Import

16060 Men's Large



Rubber Coated Palm & Index Finger

Import

16101 Men's Large
16120 Ladies, Boys



Navy Moleskin Lined Jerseys

Made in USA

06220 Men's Large, Slip On
06240 Men's Large, Knit Wrist



Blue Poly/Cotton Jersey, Knit Wrist

Import

16002 Men's Large



Natural Color Liner

Made in USA

06301 Men's Large



Orange Cotton Jersey, Knit Wrist

Made in USA

06250 Men's Large, International Orange
Import
16250 Large



Ladies Comfort Casual Slip-On Jersey

Import

16071 Assorted Colors per Pack: Blue, Green, and Black. Colors may vary.



D08 Display

Display #90000
10 Dozen, Style 16041
Display #90001
8 Dozen, Style 16006
Display #90002
12 Dozen, Style 16001
Display #90003
8 Dozen, Style 16007
Economy Jersey
Display #90013
12 Dozen 16007
Economy Jersey



Display #90100
24 Dozen 16001 Brown Jersey in a 96D Unit- (Shown Right)

Mens' Comfort Casual Slip-On Jersey, Assorted Colors

Import

16070 Men's Large, Colors: Green, Blue, and Black. Colors may vary.
Call for more Information.



KNIT GLOVES



**Medium Weight,
Cotton or Acrylic**

Made in USA

Cotton	Acrylic
XXL	01036
X-Large	01035
01030 Large	01034
01031 Medium	
Ladies'	01033



**Men's Poly/Cotton,
Medium Weight**

USA 01037 Custom Blend,
Large
Import 11037 Large



**"Grabber", Honeycomb
PVC Pattern on Both Sides,
Orange Knit**

USA	Import
X-Large	11111
Large	11112
01112 Medium	11113
01113 Small	11114



**Poly/Cotton, PVC
Dotted on Both Sides**

Import
11038 Men's Large
USA
01038 Men's Large



**"Tuff Dot", Cotton Knit,
PVC Dotted
on Palm and Back**

Made in USA
01110 Large
01111 Ladies



**"Tuff Dot", Mixed Yarn,
PVC Dotted on Both Sides**

Made in USA

01127 Men's Large



"Thermolite" Knits

Made in USA

01505 Orange, Large
01500 Camouflage, Large



"Thermolite" Knitted Styles

Made in USA

Men's		Ladies'
01510	Brown	01511
01515	Navy	01516
01520	Black	01521
01530	Green	01531
01540	3 Pr. Each Of Above	01541



**Adult Magic Gloves, Acrylic/
Spandex Knit,
Assorted Colors**

Import
11011 Adult Size, Ladies
*Color Availability May Vary.
See Page 16 for Other Colors.*



**Heavyweight Orange
Acrylic Knit**

Made in USA

01120 Men's Large
PVC Dotted One Side
01121 Men's Large
No Dots, Fits
Either Hand
01122 Ladies, Dotted
One Side



**"Ragg Wool", Wool Nylon
Blend Knit**

Made in USA

01114 Men's Large



**"Ragg Wool Tuff Dot",
Wool Nylon Blend, PVC
Dotted Palm**

Made in USA

01118 Men's Large



**"Ragg Wool", Wool Nylon
Blend Knit, Fingerless**

Made in USA

01116 Men's Large



**"Ragg Wool Tuff Dot",
Fingerless, PVC Dotted
Palm**

Made in USA

01117 Men's Large

"We can custom make gloves for you. . . Call us at 877-800-5998!"

DOUBLE PALMS - CHORES



**“Golden Hawk”,
Canvas Back, Golden
Fleece on Palm & Index
Finger**
Made in USA
03001 Men’s Large



**“Patriot”, Golden
Fleece, Laminated**
Made in USA
04003 XX-Large
04002 X-Large
04001 Large
04030 Ladies



**Golden Fleece Double
Palm, Quilted**
Import
14000 Men’s Large



**Golden Fleece Double
Palm, Laminated**
Made in USA
03030 Men’s Large



**Golden Fleece,
Blue Knit Wrist**
Import
14001 Men’s Large, 2 Ply
14002 Men’s Large, 1 Ply



**Golden Fleece Palm &
Index Finger, Striped
Back, Safety Cuff**
Made in USA
03020 Men’s Large



**“Turtleneck”, Golden
Fleece Palm & Index
Finger**
Made in USA
03010 Men’s Large



**“Eagle” Green Double-
palm, Heavy Nap, Knit
Wrist**
Made in USA
04042 XX-Large
04041 X-Large
04040 Large
04039 Ladies’



**“Eagle” Terry Machine
Knit, Black Knit Wrist**
Made in USA
04070 Heavy Wt. Large
04071 Medium Wt. Large



**“Eagle” Gold Terry
Machine Knit**
Made in USA
04095 Heavy Weight, Large



**Chore and Double
Palm Applications**
▪ Farming
▪ Warehouse Use
▪ General Purpose
▪ Cold Environmental Work



**Laminated Heavy-
weight Green Chore,
Knit Wrist**
Import
14040 Large -2 Ply



Display #90407
3 Dozen Style 14001 in a
D081 Shelf Unit



Display #90105
10 Dozen Style 14000 in a
96D Floor Unit

CANVAS



“Super Derrick”, Heavy Canvas, Cotton Poly Blend

Made in USA

03004 Large 24 oz. Import
13004 Large, 18 oz. No Logo



“Derrick”, Polycord, 18 oz., Navy Knit Wrist

Made in USA

03003 Men's Large Import
13003 Large, No Logo



“Patriot”, White Canvas, 8 oz. Weight

Made in USA

PolyCotton Blend
01130 Men's Large, 01140 Ladies'
100% Cotton
01001 Men's Large, 01020 Ladies'



“Master Rigger”, White Canvas, 12 oz. Weight

100% Cotton

01060 Men's Large, Navy Knit Wrist, **USA**
11060, No Logo, White Knit Wrist, Large, Import



White Canvas, Knit Wrist, 100% Cotton, 8 oz. Weight

Import

11001 Men's Large
11004 Ladies' - White Knit Wrist



“Driller's Gem”, 100% Cotton, 18 oz. Weight

Made in USA

03002 Men's Large



Heavy Canvas Double Palm, 100% Cotton, 16 oz. Weight

Made in USA
03005 Men's Large



“Tuff Dot” Double Palm, PVC Dotted Palm & Index Finger, 100% Cotton

Made in USA

01080 Men's Large
01081 Ladies'



“Tuff Dot”, Double Palm, 8 oz. Weight, PVC Dotted Palm & Index Finger

Import

11080 Men's Large



“American Logger”, 24 oz. Cotton 2 Ply

Made in USA

05020 Men's Large



24 oz., 2 Ply Hot Mill, 3” Knit Wrist

Made in USA

05030 Men's Large



“First Mate”, White Canvas, 10 oz., 100% Cotton

Made in USA

01221 Men's Large



“Fisherman's Choice”, Blue PolyCotton Blend, 10 oz. Weight

Made in USA

01303 Men's Large



Fluorescent Yellow Polycord, Knit Wrist

Import

13007 Men's Large
*Available in Fluorescent Green and Orange.



Proud Manufacturer of Cotton Work Gloves for the Oil Industry!

“We Take Pride in Manufacturing American Made Gloves.”

SPORTSMAN



Orange Camouflage Jersey
Import
16252 Men's Large



Green Camouflage Jersey
Import
16260 Men's Large
16261 PVC Dotted, Large



Brown Camouflage Jersey
Import
16251 Men's Large



Tree Pattern Camouflage Jersey
Import
16263 Men's Large
16264 Men's Large, PVC Dotted



Bark Pattern Camouflage Jersey
Import
16265 Men's Large
16266 Large, PVC Dotted Palm & Index Finger



Camouflage Nylon Shell, Black Latex Crinkle Palm Coated
Import
11475XS X-Small
11476S Small
11477M Medium
11478L Large

New!



Camouflage Nylon Shell, Clear Polyurethane Coated
Import
11470XS X-Small
11471S Small
11472M Medium
11473L Large

New!



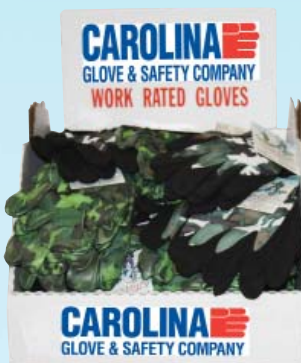
Display #90404
Includes: One Dozen 16252, 16260, 16263, and 01154 in a Shelf D081 Unit Display

Comfort Fit!

100% Cotton!



Hunting Caps, Adjustable Velcro Back Strap
Import
17500 Men's Orange
17501 Men's Camouflage



Display 90420
12 Pair Each
11472M, 11473L, 11477M, and 11478L (Med. & Large) in D081 Unit, Gloves Styles listed above Display.

New!



Men's Boot Socks

Made in USA

- 30100 Brown Knit Top
- 30101 Green Knit Top
- 30102 Red Knit Top
- 30103 Orange Knit Top
- 30104 Multi Pack of Each Color

Display #90202

Includes: 2 Dozen Each 16250, 16251, and 16260

Display# 90203

Includes: 2 Dozen Each 16252, 16265, and 16263

Display# 90205

Includes: 1 Dozen 16252, 16260, 16265, and 24 Pair 30104 Socks.

All in a Floor Display, PPFD01 Unit

Popular Sportsman Selection!



SPORTSMAN



Ponchos, Attached Hood

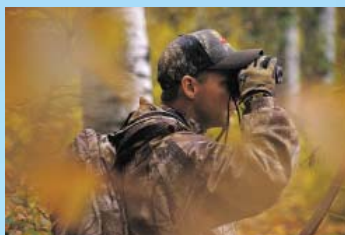
Single Ply PVC, .10mm Thickness,
52" x 80", Side Snaps, Drawstring Hood,
One Size Fits All - Men's & Ladies'

17100 Yellow Poncho
17101 Orange Poncho
17102 Camouflage Poncho

Polyethylene Poncho, Attached Hood

17105 Clear Poncho -.02 mm Thickness

Warm Wool Blend!



"Ragg Wool", Wool Nylon Blend Knit, Fingerless Made in USA

01116 Men's Large
*Dotted Style Available

Great Outdoor Camping Glove!

Hunting Orange Jersey, Knit Wrist Made in USA

06250 Men's Large -
International Orange
Import
16250 Men's Large



"Thermolite", Hunting Orange & Camouflage Knit

Made in USA

01505 Orange, Men's Large
01500 Camouflage, Large



"Tuff Dot" Heavweight Orange Cotton Knit, PVC Dotted Palm

Made in USA

01120 Men's Large
01121 Not Dotted, Knit,
Men's Large



"Fisherman's Grip" Rough Coated PVC

Import

18122 Band Top, Men's
Large
18121 12" Gauntlet Cuff,
Men's Large



Camouflage Cotton Knit

Made in USA

01150 Men's Large
Fits Either Hand



"Tuff Dot" PVC Dotted Palm, Camouflage Cotton Knit

Made in USA

01151 Men's Large



Camouflage Cotton Knit, Half Finger

Made in USA

01154 Men's Large
Fits Either Hand



"Tuff Dot" PVC Dotted Palm, Camouflage Cotton Knit, Half Finger

Made in USA

01155 Men's Large



Great Gloves For Cookouts and Camping! The Heat Eliminator!



"The Heat Eliminator" Kevlar and Nomex Blend Knit

Protects Against Temperatures up to
520 Degrees Fahrenheit.

Made in USA

04151 One Hand



COATED & CHEMICAL RESISTANT



Neoprene Coated

USA Import

08101 Knit Wrist 18101

08102 12" Gauntlet 18102

08103 14" Gauntlet 18103

All in Size Large

"Great for Chemical Protection
while working with machinery"



Black PVC, Rough Coat

Made in USA

08005 Knit Wrist Large

08006 12" Gauntlet Cuff, Large

08007 14" Gauntlet Cuff, Large



Black PVC Smooth Coat,

Red Knit Wrist

Made in USA

08001 Men's Large



Black PVC

Smooth Coat

Import

18002 12" Gauntlet
Cuff, Large

18003, 14" Gauntlet
Cuff, Large



Black PVC Smooth

Coat, Knit Wrist

Import

18001 Men's Large



"HandiMates"

**Yellow Household
Latex, Embossed
Grip, Flock Lined**

Import

12112 Large

12113 Medium

12114 Small



Yellow PVC Coated

Made in USA

08020 Knit Wrist, Large

08022 12" Gauntlet Cuff, Large

08024 14" Gauntlet Cuff, Large



**The "Freezer Glove",
Yellow PVC with Moleskin
Lining**

Made in USA

08150 Knit Wrist, Large

08160 Band Top, Large



**"Dura Grip" Blue Latex
Coated Palm, Yellow Cotton/
Polyester Knit Shell**

Import

X-Large 18070 18073 Small

Large 18071 18074 X-Small

Medium 18072



**Blue Latex
Dipped, Cotton/
Polyester Knit**

Import

18076 Large

18078 Small



**Green PVC Rough
Coated, Knit Wrist**

Made in USA

08050 Men's Large



**Green PVC Rough
Coated, 14"
Gauntlet Cuff**

Made in USA

08054 Men's Large



**Red PVC Crinkle
Coated, Knit Wrist**

Made in USA

08040 Men's Large



**Red PVC Crinkle
Coated, 12", 14"
Length**

Made in USA

08042 Men's Large- 12"

08043 Men's Large- 14"



**PVC Rough Pebble
Coated, Gripper Gloves**

Import

18122 Safety Cuff, Large

18121 Gauntlet Cuff, Large



PVC & Neoprene Gloves provide protection from chemicals, oils, and grease.

EXTREME WEAR

for Cold Weather



**“Winter Ace”,
Burgundy Grain
Leather, Fleece Lined,
Palm Patch**
Import
20000 Large
20001 Medium



**“Winter Desert Storm”,
Dark Green Grain
Leather, Fleece Lined,
Palm Patch**
Import
20010 Large
20011 Medium



**“Winter Ace”,
Black Grain
Leather, Fleece Lined,
Palm Patch**
Import
20005 Large
20006 Medium



**“Summer Desert
Storm”, Beige Grain
Leather, Fleece Lined,
Palm Patch**
Import
20015 Large
20016 Medium



**Heavy Duty Black Leather
Palm, Yellow Back & Safety
Cuff, Heavy Pile Lined**
Import
19460 Large



**Thermolite Extreme Ski
Glove, Waterproof, 100%
Dupont Insulated Fibers,
Non Slip PVC Palm**
Import
20094 X-Large
20093 Large
20092 Medium



*“Carolina Glove has the Matter in Hand
This Winter Season!”*



**Snow Glove, Water Resistant,
Thinsulate Lined,
Elastic Wrist**
Import
Black Navy
20074 X-Large 20084 X-Large
20073 Large 20083 Large
20072 Medium 20082 Medium
20071 Small 20081 Small



**“Warm Keep” Grain
Leather Palm, Heavy Duty
Fleece Lining**
Import
20030 Large



**“Blizzard Buster”, Warm
Navy Poly Fleece, Knit Wrist**
Made in USA
06310 Men's Large
06311 Boy's & Ladies Size



**Men's Acrylic Fleece Scarves,
Assorted Colors**
Import
20102 Large Scarf



**Men's Knit Toboggans,
Assorted Colors**
Import
20100 Tight Knit
20101 Loose Knit
One Size Fits All

GARDEN



“Elite” Light Blue
Polyurethane Coated,
Floral Nylon Knit
Import
11440S Small
11441M Medium
11442L Large



“Elite” Royal Blue
Polyurethane Coated,
Floral Nylon Knit
Import
11450S Small
11451M Medium
11452L Large



“Elite” Lime Green
Polyurethane Coated,
Floral Nylon Knit
Import
11445S Small
11446M Medium
11447L Large



“Elite” Royal Blue
Polyurethane Coated,
Green Floral Nylon Knit
Import
11455S Small
11456M Medium
11457L Large



“Elite” Clear
Polyurethane Coated,
Pink Floral Nylon Knit
Import
11460S Small
11461M Medium
11462L Large



“Elite” Purple
Polyurethane Coated,
Fashion Nylon Knit
Import
11435S Small
11436M Medium
11437L Large



*The New “Elite” Gloves fit like
a second skin, are fashionable,
abrasion resistant, and are
ultra lightweight for comfort.*



“Elite” Black
Polyurethane Coated,
Leopard Nylon Knit
Import
11465S Small
11466M Medium
11467L Large



**“Elite” Kid’s Garden
Gloves, Latex Coated**
Boys & Girls
Import
Lady Bug Logo Car Logo
11480S 11485S
11481M 11486M
11482L 11487L



**“Rosebud” Ladies
Vinyl, Rose Pattern**
Made in USA
01409 Small



Blue & Yellow Vinyl
Made in USA
01423 Ladies Size
01415 Blue Vinyl Only, Ladies
Import
11423 Ladies Size



**“Dura Grip” Blue Latex
Coated Palm Dipped,
Yellow Knit**
Import
18070 X-Large 18073 Small
18071 Large 18074 X-Small
18072 Medium



Waterproof!
“Handeez” PVC
Coated, Assorted Rose
Color Print, Knit Wrist
Made in USA
08080 Ladies Size



Waterproof!
“Handeez” PVC
Coated, Assorted
Rose Color Print,
Gauntlet Cuff
Made in USA
08090 Ladies Size

GARDEN



**PVC Dotted Palm,
Assorted Floral
Color Print**

Import

11403 Ladies Size

**Floral Patterns Subject To
Change*



**Assorted Floral Cotton
Prints, Knit Wrist**

Import

11404 Ladies Size

**Floral Patterns Subject
To Change*



**PVC Dotted Palm,
Floral Pattern, Poly
Cotton, Band Top**

Import

11408 Ladies Size

**Floral Patterns Subject To
Change*



**Poly Cotton Floral,
Band Top, Reinforced
Fingertips**

Import

11402 Ladies Size

**Floral Patterns Subject
To Change*



**Floral Pattern Cotton,
Band Top**

Import

11401 Ladies Size

**Floral Patterns Subject
To Change*



**Floral Pattern, Poly
Cotton, Knit Wrist**

Import

11433 Ladies Size

**Floral Patterns Subject
To Change*



**Lady Bug/Floral
Pattern, PVC Dotted
Palm & Index Finger,
Knit Wrist**

Import

11434 Ladies Size

**Floral Patterns Subject
To Change*



**8 oz. White Canvas,
Navy Knit Wrists, 100%
Cotton**

Import

11001 Men's Size

11004 Ladies Size,

White Knit Wrist



**Poly Cotton Assorted
Pastel Color Jerseys**

Import

16027 Ladies Size

**Colors Subject to Change.*



**PVC Dotted Assorted
Pastel Color Jerseys**

Import

16127 Ladies Size

**Colors Subject to Change.*



**Blue Back, Gray Grain
Goatskin Leather Palm,
Knuckle Strap, Safety
Cuff**

Import

19620 Ladies Size 8



**Purple Back, Gray Buff
Leather Palm, Knuckle
Strap, Safety Cuff**

Import

19626 Ladies Size 7



**Assorted Color
Backs, Gray Split
Cowhide Leather Palms**

Import

19456 Ladies X-Small



**Reverse Grain Goatskin
Leather Palm, Assorted
Colors**

Import

19635 Ladies' Green

19636 Ladies' Yellow



**Grain Goatskin
Leather on Palm &
Fingertips**

Import

19615 Ladies Size

Visit us at www.carolinaglove.com

GARDEN



#90402 Display

6 Dozen Assorted Ladies' Garden Gloves, Vinyls, PVC Dotted, Floral Band Top, and Jersey Knit Wrist Styles. 24 Each (3 Packs) in a D081 shelf unit.



See Our Leather Drivers on Page 3



Green Vinyl Palm, Canvas Back, Knit Wrist
Made in USA
01403 Men's



Grain Goatskin Leather Palm, Green Back & Cuff
Made in USA
01451 Ladies Size
01461 Men's Size
01460 Men's Size, Knit Wrist



Premium Doe Kidskin, Reinforced Thumb, Lanolin Properties
Made in USA
09765 Size 8 Small
09766 Size 7 X-Small



The "Roseguard", Leather Palm, Gauntlet Cuff
Import
19465 Men's Size
19466 Ladies Size
Good for Pruning, Protects against thorns!



Top Grain Cowhide, Ball & Tape Closure, Straight Thumb
Made in USA
09830 Large
09831 Medium
09832 Small



Top Grain Cowhide, Straight Thumb
Made in USA
09852 Small
09849 X-Small



New!

New Elite Gloves!

Display #90211

72 Pair "Elite" Glove Styles Included:
4 Pair each 11435S, 11436M, 11437L
4 Pair each 11440S, 11441M, 11442L
4 Pair each 11445S, 11446M, 11447L
4 Pair each 11450S, 11451M, 11452L
2 Pair each 11455S, 11456M, 11457L
2 Pair each 11465S, 11466M, 11467L
2 Pair each 11480S, 11481M, 11482L
2 Pair each 11485S, 11486M, 11487L
One Floor Display Unit, PPFD01

GARDENPRO

Display #90309

144 Pair "Elite" Glove Styles Included:
6 Pair each 11435S, 11436M, 11437L
6 Pair each 11440S, 11441M, 11442L
6 Pair each 11445S, 11446M, 11447L
6 Pair each 11450S, 11451M, 11452L
6 Pair each 11455S, 11456M, 11457L
6 Pair each 11460S, 11461M, 11462L
4 Pair each 11465S, 11466M, 11467L
4 Pair each 11480S, 11481M, 11482L
4 Pair each 11485S, 11486M, 11487L
One Metal Spinner Rack

Display #90303

Includes:
36 Pair 16027 Pastel Jerseys
24 Pair 11402 Cotton Floral, Band Top
24 Pair 11408 PVC Dotted Floral, Band Top
24 Pair 11423 Assorted Vinyl, Band Top
12 Pair 11433 Floral Print, Knit Wrist
12 Pair 19615 Grain Goatskin Leather Palm
12 Pair 19502 Soft Grain Goatskin Driver
One Metal Spinner Rack

*Styles shown on previous page



CHILDREN'S GLOVES



***Gloves Kids Love For Play,
Work, or Cold Weather!***



**Jersey Mittens, Assorted
Colors, Fleece Lined**

Made in USA

06024 Ages 5-8

06023 Ages 9-12



**Kid's Cotton Jerseys, Knit
Wrist, Assorted Colors**

Made in USA

06026 Ages 5-8

06025 Ages 9-12



**Boys "Patriot", White
Canvas, 8 oz. Weight**

Made in USA

01140 Poly Cotton

01020 100% Cotton



**Kid's Cowboy Gloves,
Jersey Hand, Vinyl-
Gauntlet Cuff, Fringe
Detail**

Made in USA

06028 Ages 5-8

06027 Ages 9-12



**"Blizzard Buster" Poly
Cotton, Fleece Lining,
Knit Wrist**

Made in USA

06313 Ages 5-8

06312 Ages 9-12



New!

**"Elite" Kid's Garden
Gloves, Lady Bug Design,
Latex Crinkle Coated**

11480S, 11481M, 11482L
(Small-Large), Import.



New!

**"Elite" Kid's Garden
Gloves, Cars Design,
Latex Crinkle Coated**

11485S, 11486M, 11487L
(Small-Large), Import.



11010 Children's Magic Gloves

Acrylic and Spandex Knit, Comfortable Fit, Provides Warmth & Dexterity.

Available in a Variety of Colors: White, Baby Pink, Pink, Hot Pink, Red, Gold, Orange, Baby Blue, Royal Blue, Navy, Dark Green, Purple, and Black. Colors are subject to change. Check our website for more information. Also Available in Ladies Size, Style **11011**.

"Our Style with a Prefix of 0 Denotes USA Made. Prefix 1 & 2 are Imports"

NEW/POPULAR STYLES



Ultra-Thin Polyurethane Coated, 13 Gauge, Nylon Shell

Import

18206 X Small 18209 Large
18207 Small 18210 XL
18208 Medium



Ultra-Thin Light Gray Nitrile Palm Coated, Meets CE Intermediate Design (EN 388-6.1, 6.2, 6.3, & 6.4)

Import

18200 X Small 18203 Large
18201 Small 18204 XL
18202 Medium 18205 XXL



Cut Resistant Engineered String Knit, Polyurethane Palm Coated, 13 Gauge

Import

Cut Level 3 18300-18304 XS-XL
Cut Level 5 18307-18311 XS-XXL



Black Crinkle Latex Dipped, Gray Poly/Cotton Knit Liner

Import

18063 Men's Large



"Hot Stuff" Mitt With Hang Up Loop, Reversible
Made in USA

04100 Per Each, Large



"Hot Pad", Terry Cloth Baker's Pad
Made in USA

04125 Per Each



Gold Grain Deerskin Driver, Gauntlet Cuff
Made in USA

With Fringe Without Fringe
09950 Large 09952 Large
09951 Small 09953 Small
*Available in Black Deerskin



Microfiber Cleaning Cloth 17110

Reusable Cleaning Cloth, Use only water, Great for cleaning glass, mirrors, chrome, cars, computers, and much more. Hypoallergenic, No Chemical Additives, Two Cloths Per Pack.

*Available with Clip Strip to display and in a Counter Display D081.

Great Grip for Your Swing!

Sporty and Comfortable Fit!



Premium Cabretta Leather Golf Glove
One Hand, With Palm Patch

Import

21034 X-Large
21033 Large
21032 Medium
21031 Small



"Palm Protector" Goatskin Leather Back & Mesh Back, Padded Palm Patch

Import

Leather Back	Mesh Back
20053 X-Large	20064
20050 Large	20063
20051 Medium	20062
20052 Small	20061



Red Mechanics Gloves, Premium Simulated Black Leather Palm Patch

Import

21015 XX-Large 21012 Medium
21014 X-Large 21011 Small
21013 Large



Blue Mechanics Gloves, Premium Simulated Black Leather Palm Patch

Import

21021 XX-Large
21020 X-Large
21019 Large
21018 Medium



Black Mechanics Gloves, Premium Simulated Black Leather Palm Patch

Import

21045 XX-Large 21042 Med.
21044 X-Large 21041 Small
21043 Large

POPULAR ASSORTMENTS

DISPLAY 90305

AMERICAN MADE WORK GLOVE ASSORTMENT

- 12 pair 09850 Grain Cowhide Leather Driver, Men's Large
- 12 pair 09402 Heavy Duty Leather Palm, Safety Cuff, Large
- 12 pair 04001 "Patriot", Heavy Yellow Chore, Men's Large
- 12 pair 04040 "Eagle", Heavy Green Chore, Men's Large
- 24 pair 06001 9 oz. Brown Jersey, Knit Wrist, Men's Large
- 12 pair 06003 9 oz. Brown Jersey, Knit Wrist, Men's Extra Large
- 24 pair 06040 9 oz. Brown Jersey with PVC Dots, Men's Large
- 12 pair 01080 "Tuff Dot" 10 oz. Canvas with PVC Dots, Men's Large
- 12 pair 01060 "Master Rigger", 12 oz. White Canvas, Knit Wrist, Large
- One Metal Spinner Rack & Header Sign



01080



01060



06001 & 06003



06040



09850



04040



04001



09402



Display #90302

- 12 Pair 19845 Fleece Lined Split Cowhide Driver, Mens' Large
- 12 Pair 19841 Gray Split Cowhide Leather Driver, Unlined, Men's Large
- 12 Pair 19402 Gray Leather Palm, Striped Back, Safety Cuff, Men's Large
- 12 Pair 14040 Heavy Green Chore, Men's Large
- 12 Pair 14000 2 Ply Golden Fleece Chore, Men's Large
- 12 Pair 16041 PVC Dot Brown Jersey, Men's Large
- 36 Pair 16007 Medium Weight Brown Jersey, Men's Large
- 12 Pair 16060 Red Lined Brown Jersey
- 12 Pair 11037 Medium Weight Poly/Cotton Knit, Men's Large
- 12 Pair 11080 PVC Dotted Canvas, Men's Large
- One Metal Spinner Rack and Header Sign.

for illustration purposes,
7250 Rack



14000



14040



11080



19841



19845



Made in USA!



"The Heat Eliminator"

Kevlar & Nomex Blend
Protects Against 520 Degree
Fahrenheit Heat

04151 One Hand

The Heat Eliminator Displays

- 90600 64 Each Style 04151 in PPFD02 Floor Unit
- 90601 48 Each Style 04151 in PPFD02
- 90602 72 Each Style 04151 in PPFD02
- 90700 24 Each in a Shelf Display D081 (Not Shown)

**Great Sellers! Call To
Ask About More
Assortments Available!**



16007



16060



11037



19402



16041

RAIN-WEAR



Ponchos, Attached Hood

Single Ply PVC, .10mm Thickness,
52" x 80", Side Snaps, Drawstring Hood,
One Size Fits All - Men's & Ladies'

Import

17100 Yellow Poncho, .10mm Thickness
17101 Orange Poncho, .10mm Thickness
17102 Camouflage Poncho, .10mm Thickness

Polyethylene Poncho, 52" x 80", Hood

17105 Clear Poncho, .02 mm Thickness



PVC/Polyester 2-Piece Rainsuit, Detachable Hood, 48" Length, .35mm Thickness

Import

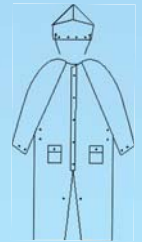
17060 - Small	17064- 2XL
17061 - Medium	17065- 3XL
17062 - Large	17066- 4XL
17063 - XL	17067 - 5XL
	17068 - 6XL



PVC/Polyester 2-Piece Yellow Slicker, Detachable Hood, 60" Length, .35mm Thickness

Import

17070 - Small	17073- X-Large
17071 - Medium	17074- 2XL
17072 - Large	17075- 3XL



Corduroy Collar

Cape Back with Nylon Vents for Breathability

Adjustable Suspender Clips for Fastening

Under Arm Vents

Zipper Front For Extra Protection

Two Front Flap Pockets for Storage

Adjustable Ankle Snaps & Cuff Snaps for Better Fit

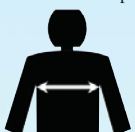


PVC/Polyester 3-Piece Yellow Rainsuit,

Coverall Pants, Hood, Adjustable
Suspenders, Zipper Front, Corduroy
Collar, Adjustable Ankle & Cuff Snaps

.10mm	.25mm	.35mm
1- Layer	1- Layer	2 - Layer
17040 - S	17050 - S	17000 - S
17041 - M	17051 - M	17001 - M
17042 - L	17052 - L	17002 - L
17043- XL	17053 - XL	17003 - XL
17044 - 2XL	17054 - 2XL	17004 - 2XL
17045 - 3XL	17055 - 3XL	17005 - 3XL
		17006 - 4XL
		17007 - 5XL
		17008 - 6XL
		17009 - 7XL

Measure Chest Circumference
Under Arm Pits For Proper Sizing



34-36	38-48	42-44	46-48	50-52	54-56	58-60	62-64	66-68	70-72
Small	Medium	Large	X-Large	2XL	3XL	4XL	5XL	6XL	7XL

SAFETY-WEAR



5 Buckle Strap Rubber Boots

Fabric Lined, Bar Tread Outsole, Over-The-Shoe Style

17130 Size 6	17136 Size 12
17131 Size 7	17137 Size 13
17132 Size 8	17138 Size 14
17133 Size 9	17139 Size 15
17134 Size 10	
17135 Size 11	



Yellow Rubber Slush Boots, 17" Length

Fabric Lined, Top Strap, Bar-Tread Outsole, Over-The-Shoe Style

17140 Size 7	17145 Size 12
17141 Size 8	17146 Size 13
17142 Size 9	17147 Size 14
17143 Size 10	17148 Size 15
17144 Size 11	17149 Size 16



Black PVC Boots, 16" Length

Bar-Cleat Outsole, Injection Molded, Over-The-Sock Style

17150 Size 6	17154 Size 10
17151 Size 7	17155 Size 11
17152 Size 8	17156 Size 12
17153 Size 9	17157 Size 13

**Also Available in Steel Toe*



Black Rubber Hip Wader, Steel Safety Toe

Fabric Lined, Steel Shank, Belt Loop Strap, Bar-Tread Outsole, Over-The-Sock Style

17200 Size 6	17204 Size 10
17201 Size 7	17205 Size 11
17202 Size 8	17206 Size 12
17203 Size 9	17207 Size 13



Bar-Cleat Outsole

Bar-Tread Outsole



Steel Toe



Reinforced Toe Cap, Black Rubber Boots, 16" Length

Fabric Lined, Bar-Tread Outsole, Over-The-Sock Style

17171 Size 6	17175 Size 10
17172 Size 7	17176 Size 11
17173 Size 8	17177 Size 12
17174 Size 9	17178 Size 13

**Also Available in Steel Toe*

**Our Top Priority is
Customer Satisfaction!
Wear with Confidence!**



Check out our Hard Hats and Safety Vests on Page 27!



Safety Fluorescent Orange Back, Reflective Knuckle Strap/Cuff, Gray Leather Palm

19425 Men's Large



Nuisance Mask

17300 Fabric Lined, Elastic Head Strap, Adjustable Aluminum Nosepiece

SAFETY GLASSES



Carospec Safety Glasses, Sporty Wrap Around Design

Lightweight and Frameless, Universal Fit Temples.

17310 Blue Mirror Finish, Gray Lens



Carospec Safety Glasses, Sporty Wrap Around Design

Lightweight and Frameless, Universal Fit Temples.

17312 Amber Lens



Carospec Safety Glasses, Sporty Wrap Around Design

Lightweight and Frameless, Universal Fit Temples, Available in Anti-Fog.

17311 Gray Lens



Carospec Safety Glasses, Sporty Wrap Around Design

Wide Angle Vision, Lightweight, Frameless, Universal Fit Temples, Available in Anti-Fog.

17313 Clear Lens



Polycarbonate Single Piece Safety Lens

17319 Lightweight, Scratch Resistant, Vented Temples, UV Protection, Visitor Spectacles.



Carospec Safety Glasses, Lightweight 1-Piece Polycarbonate Lenses and Frame

17315 Scratch Resistant, Ratchet Temples, Protects against UV Rays.

**All Eyewear
Blocks 99%
of Harmful
UV Light,
Our Safety
Glasses
Meet or
Exceed ANSI
Z87.1-2010
Safety
Standards.**



Direct Side Ventilation Safety Goggles

17318 Clear PVC Frame, Polycarbonate Anti-Scratch Lenses, UV Protection, Adjustable Strap.



Yellow Frame, Gray Lens



Blue Frame, Clear Lens



Carospec Safety Glasses, Wrap Around, Single Piece Lens

17317 Clear Lens, Polycarbonate Temples and Lens, Adjustable Temples, Scratch Resistant Coating, UV Protection, Available in Other Lens Colors and Frames. Call to check our varied style options!



Indirect Ventilation Safety Goggles

17320 PVC Frame, Polycarbonate Anti-Scratch Lenses, UV Protection, Adjustable Strap.

DISPLAYS



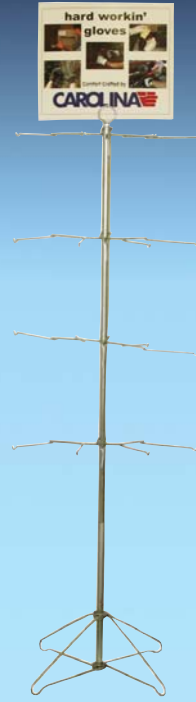
96D Display Unit

Holds up to 24 Dozen
Gloves W 26" x D 24" x H 52"



7250 RACK

Holds 12 Dozen Gloves
H 76" x W 23" x D 21"



7916 RACK

Holds up to 12 or 16 Dozen
Gloves based on prongs added
H 76" x W 23" x D 21"



PPFD01 Display

Holds up to 8
Dozen Gloves
64"L x 14"W x 14"D



D08 Display Unit

Holds up to 12
Dozen Gloves



CLIP STRIPS

Holds 12
Items per
Strip



D081 Display

Holds up to 2 Dozen Gloves
13"L x 12"W x 9"H

13"L x 12"W x 48"H

**CALL US ABOUT CREATING A DISPLAY WITH YOUR
SELECTION OF GLOVES FOR RETAIL, 877-800-5998!**

KEVLAR[®] KNITS

only by DuPont[™]



KV28

100% Kevlar[®] Reversible Seamless Machine Knit, Cut Resistant Level 3. Available in Various Weights and in Sizes XS-XL.



NFKV3221

100% Kevlar[®] 1/2 Finger Reversible Seamless Knit. Cut Resistant Level 2. Available without Dots - NFKV322L16 and Dotted on both sides - NFKV32211.



13KV12

100% Kevlar[®] 13-Cut Lightweight Reversible Seamless Knit. Cut Resistant Level 2. Available in Sizes S-XL, Available Dotted.



KVPLCK30

Kevlar[®] Plated Cotton Knit, Men's Large, Cut Resistant Level 2. Available in Various Weights and in Sizes XS-XL. Available Dotted.



KVMTCK743KW3

Machine Knit Kevlar[®] and Cotton Mock Twist Terry Knit, 3 inch Knit Wrist, Reversible, Cut Resistant Level 2, Men's Large, Also Available in Ladies Size.



KV22HC

100% Kevlar[®] Knit with PVC Honeycomb Pattern on Both Sides, Cut Resistant Level 2. Available in Lightweight to Heavyweight and in Sizes S-XL.



KVDUP30

Kevlar Armor Technology Medium Weight, Made with Aramid & Steel Wire, Cut Resistant Level 4. Available in Sizes M, L, & XL. Available Plated.



HEATELIM

The HEAT ELIMINATOR[™] Exterior Layer Made of DuPont NOMEX[®] and Kevlar[®], Interior Layer of 100% Cotton, Sold Per Each, Cut Resistant Level 3. **Packaged Style 04151**



KV2811

100% Kevlar[®] Reversible Seamless Machine Knit with PVC Dots on Both Sides for Extra Grip and Wear. Cut Resistant Level 3. Available in Various Weights and in Sizes S-XL. Available Dotted on One Side



KVCKSL68EN11

Nitrile Block Dotted on Both Sides, Kevlar Knit, Reversible, Extra Heavy Weight, Sizes M-XL.



KVKWD16

KVKWTH18

BKKVKWTH18

KEVLAR SLEEVES

KVKWD16, KVKWTH18, BKKVKWTH18

Kevlar[®] Tubing, Available in a Variety of Lengths, Colors, Thumb Hole, Thumb Slot, Single or Double Ply, and Overedging. Call for Information. *Available with Fiber Shield Treatment.*

WELDERS



**Premium Grain Goatskin
TIG Welder, Clute Pattern,
Straight Thumb, Full Leather
2" Cuff**

USA Import
TPG48BT ITPG48BT



**Heat Resistant Leather Fully
Weltded, 2 - Piece Welder**

USA Import
S48L Lined Back & Palm —
48 Value Welder, Unlined —



**Full Heat Resistant Leather,
Wing Thumb, Fully Weltded &
Lined**

USA Import
— Value Grade IES50
52 Lined Back & Palm IS52



**Select Leather, Wing Thumb,
One-Piece Back, Fully Weltded,
Lined Palm & Back**

USA Import
— Value Grade IEBT52
BT52 "Bucktan" Leather IBT52
H52 "Hound Dog" Leather —



**Brown Leather Welder,
Reinforced Thumb,
Kevlar® Thread Sewn,
Straight Thumb, Full Sock
Lined, Gunn Pattern**

USA Import
— IS52RI



**Blue Leather Welder,
Reinforced Thumb & Palm,
Full Sock Foam Lined,
Wing Thumb, Kevlar®
Thread Sewn, Gunn Pattern**

USA Import
— Premium Select IBL51RI
Shoulder Leather
— Premium Side Split IBL52RI
Leather



**Goatskin TIG Welder,
Kevlar® Thread Sewn, Gunn
Pattern, Split Leather Cuff.**

USA -TPG48SC, 2" Cuff, Wing
Thumb
Import - ITPG48SC, 4" Cuff



**Cowhide MIG Welder, Kevlar®
Thread Sewn, Wing Thumb,
Gunn Pattern, Split Leather Cuff**

USA Import
— 4 1/2" Leather ITG48SC
Gauntlet Cuff



**Reflective Aluminized Leather,
Heat Resistant Leather Palm,
Lined Back & Palm**

USA Import
52ALB&T Cotton Lining —
52ALB&TWL Wool Lining —



**Foundry Welder, Kevlar®
Thread Sewn, Reinforced
Thumb, Full Sock Lined,
Clute Pattern**

USA Import
— Premium Select IKTFWRI
Shoulder Leather



**Value Grade Shoulder
Leather Welder, Palm &
Finger Reinforcement,
Kevlar® Thread Sewn**

USA Import
— Wing Thumb IES50PFR
— 16" Long IES50PFR16



**Green Heat Resistant
Welder's Mitten, Lined
Palm & Back**

USA Import
MS48L —

UTILITY GLOVES



**Cowhide Leather Driver,
Keystone Thumb, Shirred
Wrist**

Made in USA

KTTRB99KTE (S-XXL)



**Grain Sheepskin Leather
Driver, Shirred Wrist**

Made in USA

SC99E Sizes (S-XL)



**Pearl Grain Goatskin
Linesman Driver**

Made in USA

OPG639E Sizes (8-12)



**Pearl Grain Goatskin, 4" Cuff,
Straight Thumb, Sizes 8-12.**

Made in USA

OAPG6010EWH Size10

OAPG6011EWH Size 11

OAPG6012EWH Size 12

*Available in Red Cuff , Size 8-12



**Premium Cowhide Leather,
Shirred Cuff, Straight Thumb,**

Made in USA

9999E (XS-XL)



**Select Cowhide Leather
Palm, Full Leather Back,
Gauntlet Cuff**

Made in USA

URS5957PEG Sizes (9-12)



**Yellow Back, Grain
Leather Palm, Knuckle
Strap, Gauntlet Cuff**

Made in USA

CYA5955WT Sizes (S-XL)



**High Voltage Linesman Gloves,
Top Grain Leather Construction,
Adjustable Pull Strap**

Made in USA	Size	Made in USA	Size
609.5	9.5	6010.5	10.5
6010	10	06011	11

*Available in Orange & Yellow Rubberized Gauntlet Cuffs



**Select Grain Leather
Palm, Leather Back,
Striped Gauntlet Cuff**

Made in USA

5957WTE Sizes (L & XL)



**Select Grain Cowhide
Leather Palm, Knuckle
Strap, Striped Back**

Made in USA

5955S Safety Cuff

5955 Gauntlet Cuff



**Select Side Split
Cowhide, Safety Cuff**

Made in USA

5755S Men's Large



**Poly/Cotton Knit, Light Weight,
Used as a Liner**

Import

IK20CB5 Small & Large

PALM COATED



**PVC Honeycomb
Pattern Knit**

Available in Sizes S-XL

USA Import
KHC Heavy Weight IKHC



**One-Sided PVC Palm Coated,
Natural White
Cotton/Polyester Blend Knit**

USA Import
— Brown Palm IK27CBBRNC



**Blue Latex Palm Coated,
Cotton/Polyester Knit**

Available in Sizes S-XL

USA Import
— 10 Gauge IKLPC



**Textured Blue Latex Palm
Coated, Yellow Cotton/
Polyester Knit**

Available in Sizes XS-XL

USA Import
— 10 Gauge IKBLPD



**Ultra-Thin Light Gray
Nitrile Palm Coated, Meets
CE Intermediate Design
(EN 388-6.1, 6.2, 6.3 & 6.4)**

Available in Sizes XS-XL

USA Import
— 15 Gauge I13KNIGNPD
White Nylon Shell



**Ultra-Thin
Polyurethane Coated, 13 Gauge
Knit**

Available in Sizes XS-XL

USA Import
— White I13KNIWPUPD



**Ultra-Thin
Polyurethane Coated, 13
Gauge, Nylon Shell**

Available in Sizes XS-XL

USA Import
— Gray Palm I13KNIGPUPD



**Two-Sided Blue PVC Blocks,
Knit Shell**

Available in Small & Large

USA Import
— Standard Wt. IK25CB211B



**100% Kevlar® Knit Shell,
Ultra-Thin Black Nitrile
Palm Coated**

Available in XS-XL

USA Import
— 13 Gauge I13KVKBPD



**Thermal Lined, Latex
Coated Palm**

Available in Sizes S-2XL

Import Colors
IKBLPDTLLGRC9 Hi Viz Green/Blue Palm
IKBLPDTLNC9 Blue/Blue Palm
IKGLPDTLGC9 Gray/Gray Palm



**Engineered Cut Resistant,
Gray Polyurethane
Coated, 13 Gauge Knit**

Available in XS-XL

Import Cut Level
I13DKPUPD Cut Level 3
I13DK5PUPD Cut Level 5



**Black Nitrile Palm Coated,
15 Gauge Nylon Shell**

Import

I13KNIBKNFPD Sizes S-XL

SAFETY-WEAR



Bump Cap

42033 4 Point Pinlock Suspension

Polyethylene Construction, Air Holes, Lightweight, For Minor Bumps, and Easy Adjustment



Full Brim Hard Hat

42020 6 Point Ratchet Suspension

42021 6 Point Pinlock Suspension

*With Pillowed Brow Pad and Top Ribbon Pad for Comfort



Cap Style Hard Hat

42000 4 Point Pinlock Suspension

42001 6 Point Pinlock Suspension

42002 4 Point Ratchet Suspension

42003 6 Point Ratchet Suspension

*High Density Polyethylene Construction, PVC Brow Pad, Vertical Height Adjustment



Hard Hats Available in Assorted Colors

Hard Hats Meet ANSI Z89.1-2009 Standard, Type 1, Class C, G, & E



Reusable Earplugs

41011 Uncorded

Noise Reduction Rating 27dB, Washable & Reusable, 100 Pairs Individually Packaged Per Box.



Reusable Earplugs

41012 Corded

Noise Reduction Rating 27dB, Washable, Complies with ANSI S3.19, 100 Pairs Individually Packaged Per Box



Foam Earplugs

41000 Uncorded - 200prs./Box

41001 Corded - 100 prs./Box
Soft Foam, Tapered Shape, Noise Reduction Rating 31dB, Complies with ANSI S3.19.



We Are Your #1 Source for Safety Products!



40006-40010

Fluorescent Orange Safety Vest, 2" Wide Fluorescent Yellow Stripes, Zipper Front, 100% Polyester, Sizes M-3XL Class 2, ANSI/ISEA 107



40003

Fluorescent Orange Safety Mesh Vest, 2" Fluorescent Yellow/Silver Stripes, Velcro Closure, 100% Polyester, One Size Fits All
#40002 Available with 1" Stripes



40011-40015

Fluorescent Green Safety Vest, Zip Closure, 2" Reflective Stripes, 100% Polyester, Class 2, ANSI/ISEA 107, Size M-3XL.



40005

Fluorescent Green Mesh Safety Vest, 2" Fluorescent Orange/Silver Stripes, Velcro Closure, 100% Polyester, One Size Fits All.
#40004 Available in 1" Stripes

TRADEMARKS

**AMERICAN
LOGGER**

*The
Fisherman's
Choice*



DERMAGARD™

MEDIGARD™



**DRILLER'S
GEM**

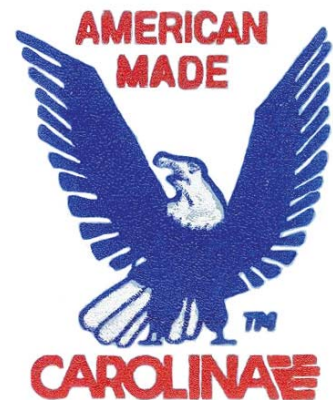


**KEEP ON
TRUCKIN'**



Golden Hawk

Caroguard™



*The First
Mate*

CAROLINA

GLOVE & SAFETY COMPANY

**P. O. Box 999, 116 McLin Creek Rd.
Conover, NC 28613**

Phone: 877-800-5998, 800-438-6888

Fax: 828-485-2418 or 828-464-1710

Website: www.carolinaglove.com

**Email: salescon@carolinaglovecompany.com
2013**



**Scan With Your
Smartphone To
Visit Our Website!**